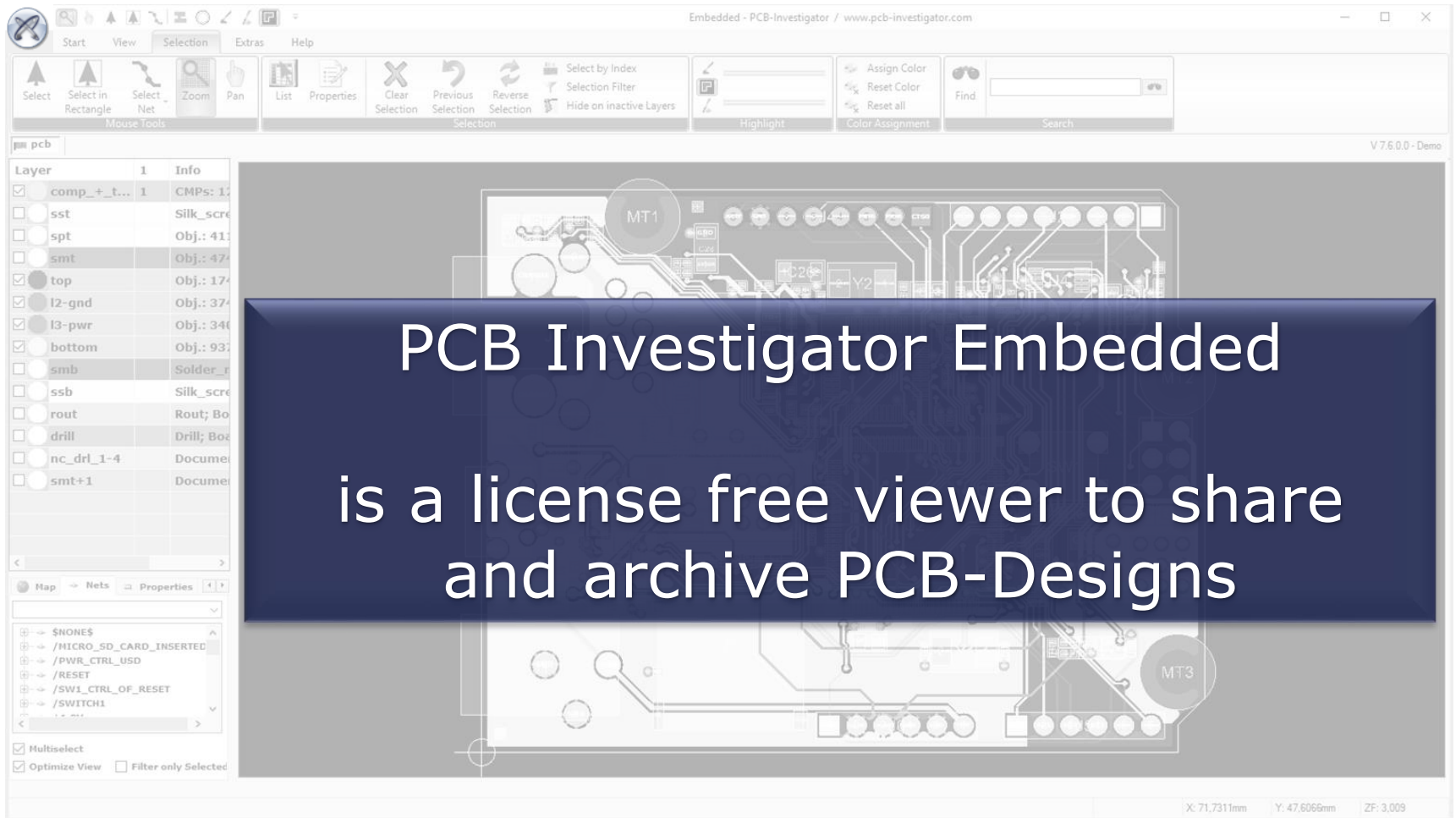


# PCB-Investigator Embedded

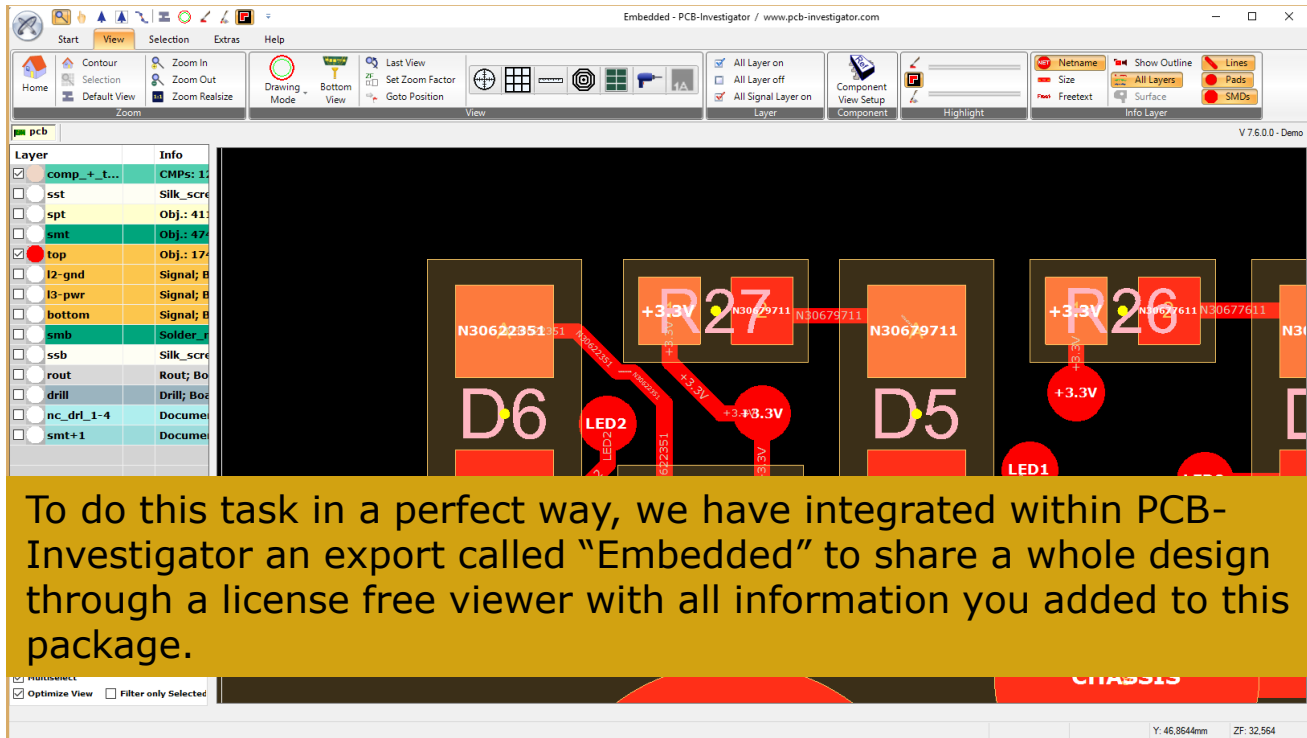


# PCB-Investigator

Embedded

Formats

There is always the need to share information about the PCB with colleagues, suppliers and customers. In many cases companies use PDF, Images or Drawings to provide information about topics needed to be discussed to do a release of a new device.



The screenshot displays the PCB-Investigator software interface. The main window shows a PCB layout with various components highlighted in red and orange. Components include resistors R27 and R26, diodes D6 and D5, and LEDs LED1 and LED2. The layout is overlaid on a dark background. The interface includes a menu bar (Start, View, Selection, Extras, Help), toolbars for navigation and editing, and a layer list on the left. The layer list shows layers such as comp\_+\_t..., sst, spt, smt, top, l2-gnd, l3-pwr, bottom, smb, sssb, rout, drill, nc\_dri\_1-4, and smt+1. The main window title is "Embedded - PCB-Investigator / www.pcb-investigator.com".

To do this task in a perfect way, we have integrated within PCB- Investigator an export called "Embedded" to share a whole design through a license free viewer with all information you added to this package.

# PCB-Investigator

Embedded

Formats

Possible content of the Embedded design

Component Reference, Position, Rotation, Part number .....

Net Names

Net Connections

Images

All data imported to supported formats

Perfect to archive and give access to all content even after years

# Import/Export

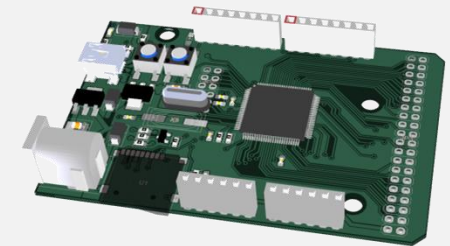
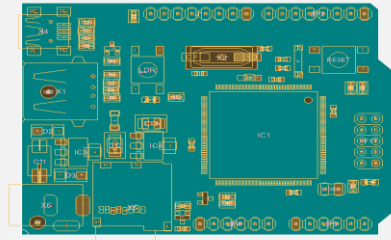
Embedded

Formats

Format 2D	Import	Export
ODB++	JA	JA
IPC-2581	JA	JA
GenCAD 1.4	JA	JA
EAGLE „ULP“	JA	Nein
Gerber274x	JA	JA
Excellon	JA	Nein
Sieb&Meyer	Ja	Ja
DXF	JA	JA
DPF	JA	Nein

Format 3D	Import	Export
VRML	JA	JA
Obj	JA	JA
X3D	JA	JA
XAML	JA	JA



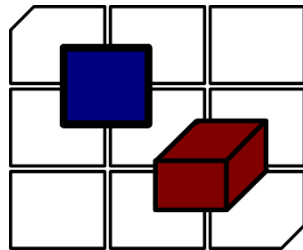


# EASYLOGIX.DE

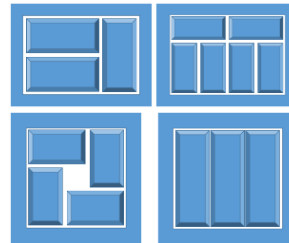
**CAD/CAM  
for electronics**



PCB-Investigator



Native Board Import



Panel Optimizer



PCB-I-Physics

**Schindler & Schill GmbH**

Im Gewerbepark D 33  
93059 Regensburg  
Deutschland

Tel: +49 941 56813620  
Email: [info@easyLogix.de](mailto:info@easyLogix.de)  
Web: [www.easyLogix.de](http://www.easyLogix.de)

09/2016

# Software Portfolio

## Useful Links:

PCB-Investigator  
[www.pcb-investigator.com](http://www.pcb-investigator.com)

PCBi-Physics  
[www.PCBi-Physics.com](http://www.PCBi-Physics.com)

Native Board Import (3D Interface to CATIA, SiemensNX, SolidWorks, SolidEdge)  
[www.sts-development.biz](http://www.sts-development.biz)

GerberLogix  
[www.gerberLogix.com](http://www.gerberLogix.com)

Online Gerber Viewer  
[www.Gerber-Viewer.com](http://www.Gerber-Viewer.com)

Software Development, CAD Converter, data connection  
[www.easyLogix.de](http://www.easyLogix.de)

Get in touch,  
[info@easylogix.de](mailto:info@easylogix.de)  
Tel. +49 941 568 136 20