

www.easyLogix.de

Software Development

Plug-In PCB-Investigator:

„Tombstone Analysis“ shows assemblies with two pins
and their difference in size

Schindler & Schill GmbH

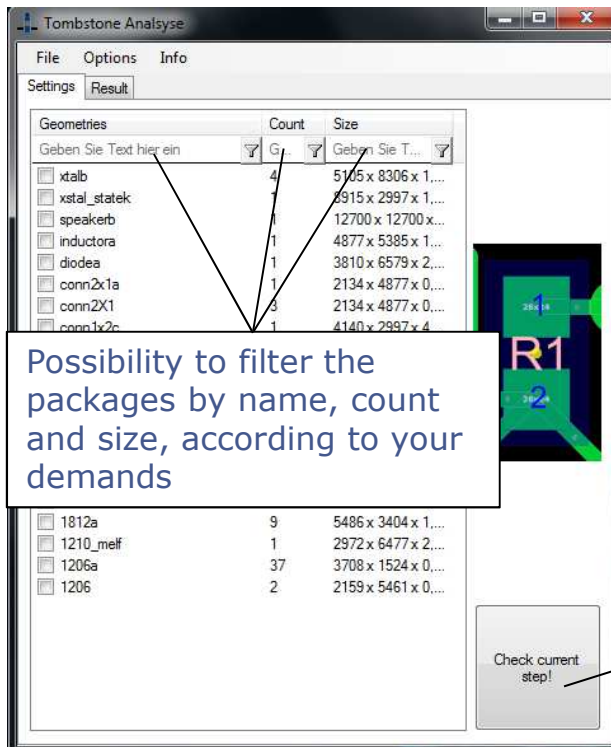
Bruderwöhrdstraße 15b
93055 Regensburg
Deutschland

Tel: +49 941 604889719
Email: info@easyLogix.de
Web: www.easyLogix.de

Tombstone Analysis Plug-In

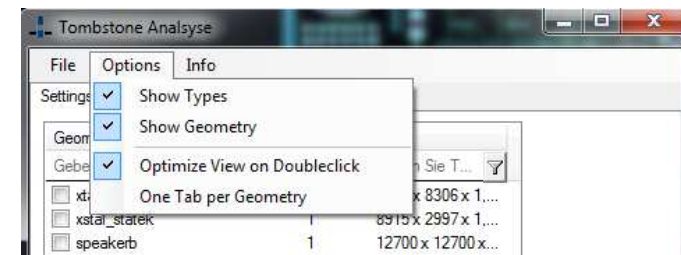
After installing the Plug-In you get a new menu item  Analyse Tombstones .

List of all relevant packages of the job



Possibility to filter the packages by name, count and size, according to your demands

Start the analysis

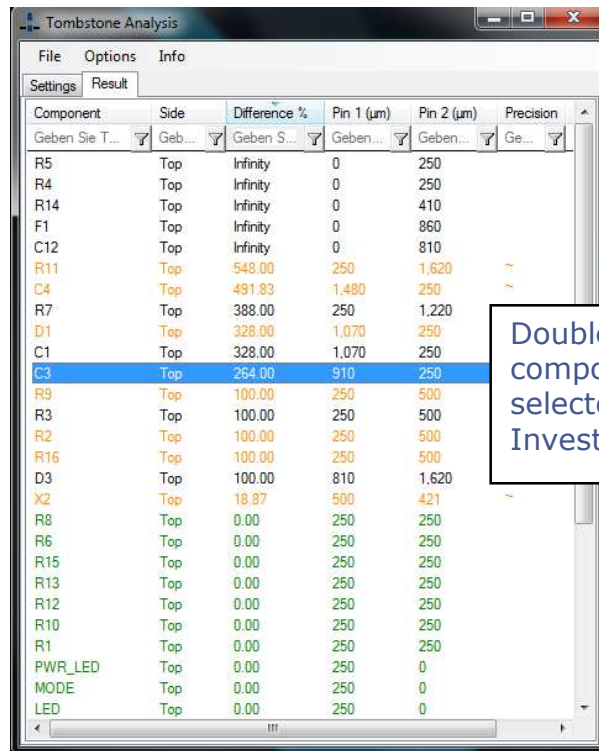


Check the boxes to

- see the different widths of the single conductive paths
- see the belonging package
- zoom in the component with double click
- make a tab for every package in the result list

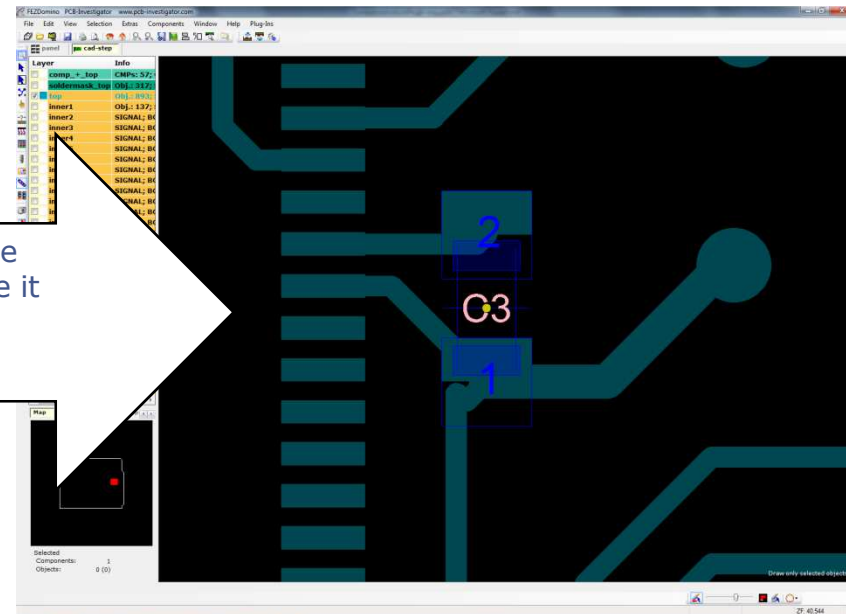
Tombstone Analysis Plug-In

List of results



Component	Side	Difference %	Pin 1 (µm)	Pin 2 (µm)	Precision
R5	Top	Infinity	0	250	
R4	Top	Infinity	0	250	
R14	Top	Infinity	0	410	
F1	Top	Infinity	0	860	
C12	Top	Infinity	0	810	
R11	Top	548.00	250	1,620	
C4	Top	491.83	1,480	250	
R7	Top	388.00	250	1,220	
D1	Top	328.00	1,070	250	
C1	Top	328.00	1,070	250	
C3	Top	264.00	910	250	
R9	Top	100.00	250	500	
R3	Top	100.00	250	500	
R2	Top	100.00	250	500	
R16	Top	100.00	250	500	
D3	Top	100.00	810	1,620	
X2	Top	18.87	500	421	
R8	Top	0.00	250	250	
R6	Top	0.00	250	250	
R15	Top	0.00	250	250	
R13	Top	0.00	250	250	
R12	Top	0.00	250	250	
R10	Top	0.00	250	250	
R1	Top	0.00	250	250	
PWR_LED	Top	0.00	250	0	
MODE	Top	0.00	250	0	
LED	Top	0.00	250	0	

Doubleclick on the component to see it selected in PCB- Investigator



Tombstone Analysis Plug-In

- The „Tombstone Analysis“ Plug-In finds components with two pins, which have different sizes. Problems in the production will arise, if the difference in size is too big.
 - Starting the Plug-In you will see a list with the relevant packages of the current job. You can further filter the packages by name, count and size.
 - With “Options” you can customize your list of results:
 - Check the box “Show Types” to see the different widths of the single conductive paths
 - Check “Show Geometry” to see the package belonging to the component
 - Check “Optimize View on Doubleclick” to zoom in the component with doubleclick
 - Check “One Tab per Geometry” to create a tab for every single package
 - After clicking “Check current step!”, the list of results will pop up.
 - The results will be marked by color:
 - Green results identify components of the same size
 - Black results stand for components with different size
 - Orange results tell you that a precise calculation was not possible
 - Of course you can save your settings and load them the next time or export your results as TXT or CSV.
-